

Meeting **World Food Needs**  
with **GM Rice?**

The Current Japanese Rice Situation

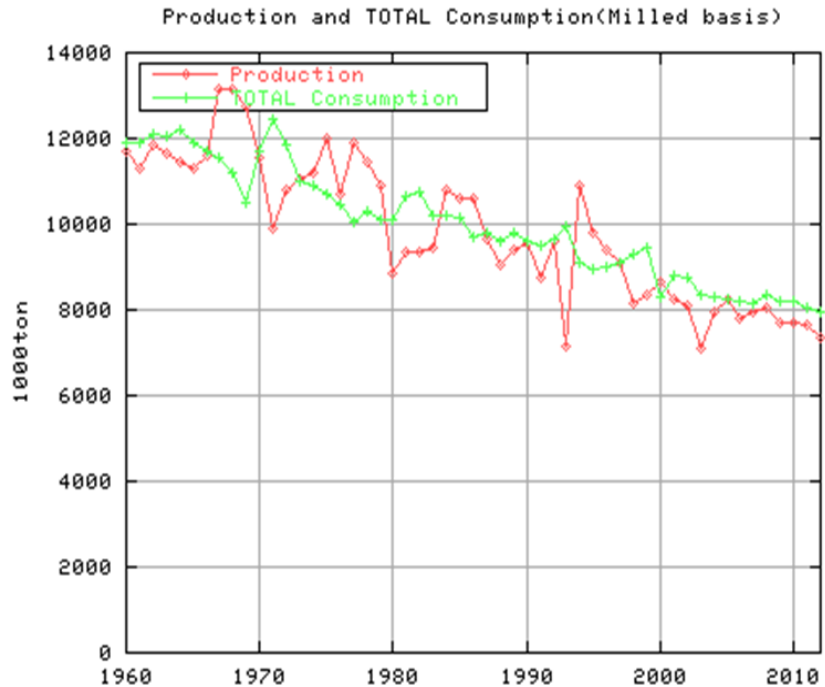
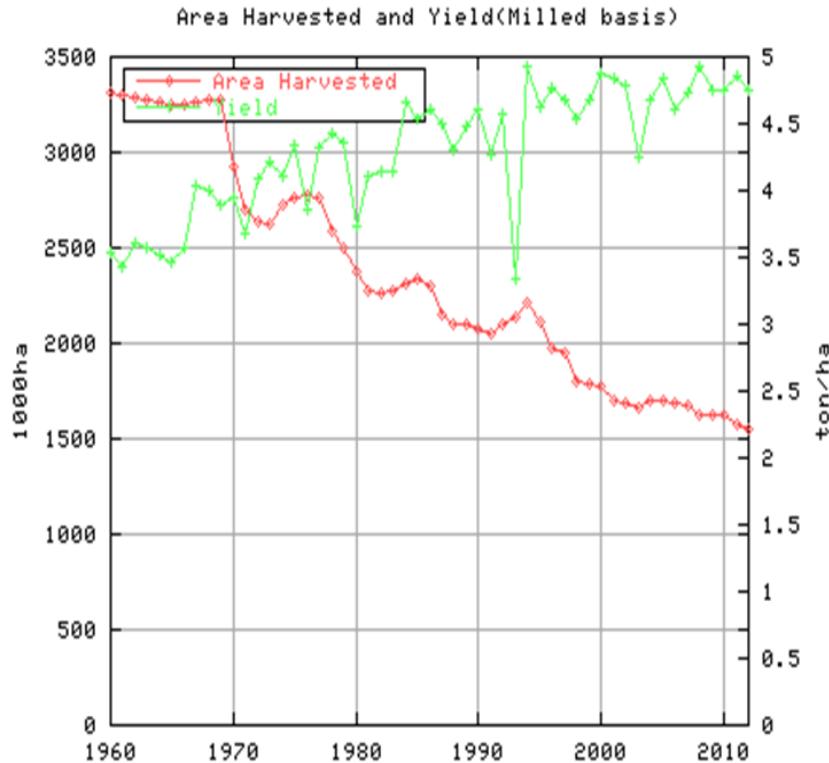
Shoichi Ito, Ph.D. 伊東正一  
sito@agr.kyushu-u.ac.jp  
Kyushu University, Japan九州大学大  
学院農学研究院,  
<http://worldfood.apionet.or.jp>  
October 8, 2012



**DIVISION OF AGRICULTURE**  
**RESEARCH & EXTENSION**

*University of Arkansas System*

# Rice production and consumption in Japan



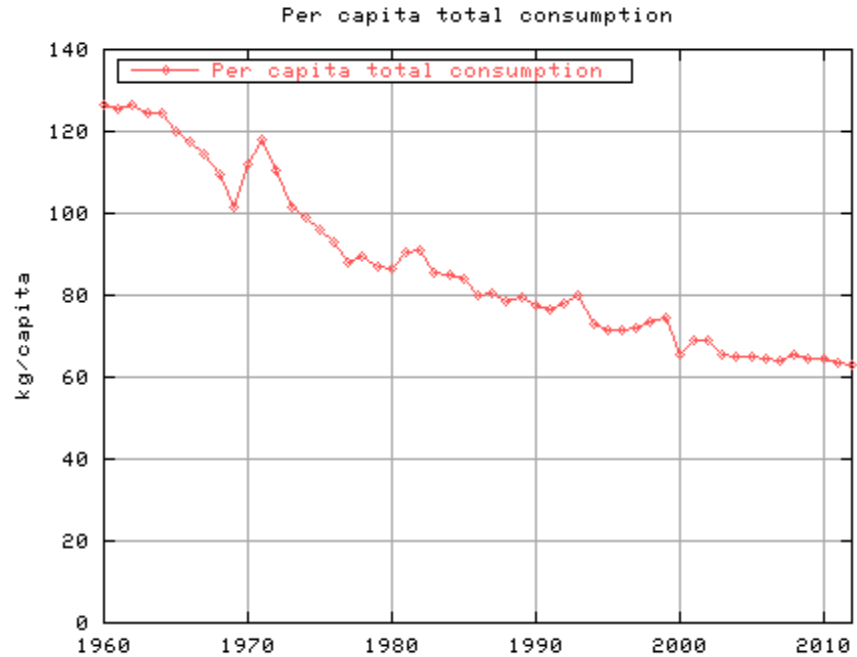
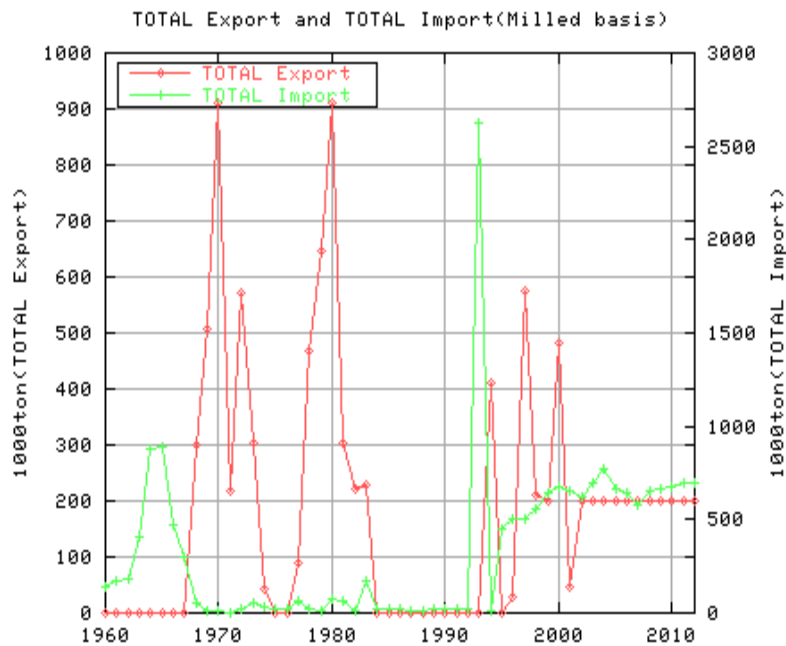
**The compulsory rice diversion program started in 1970.**

Sources: 伊東正一: 世界の食料統計、<http://worldfood.apionet.or.jp/graph/index.html>

元データ: USDA: PS&D Online, September 2012;

USBC: International Data Base, July 2003.

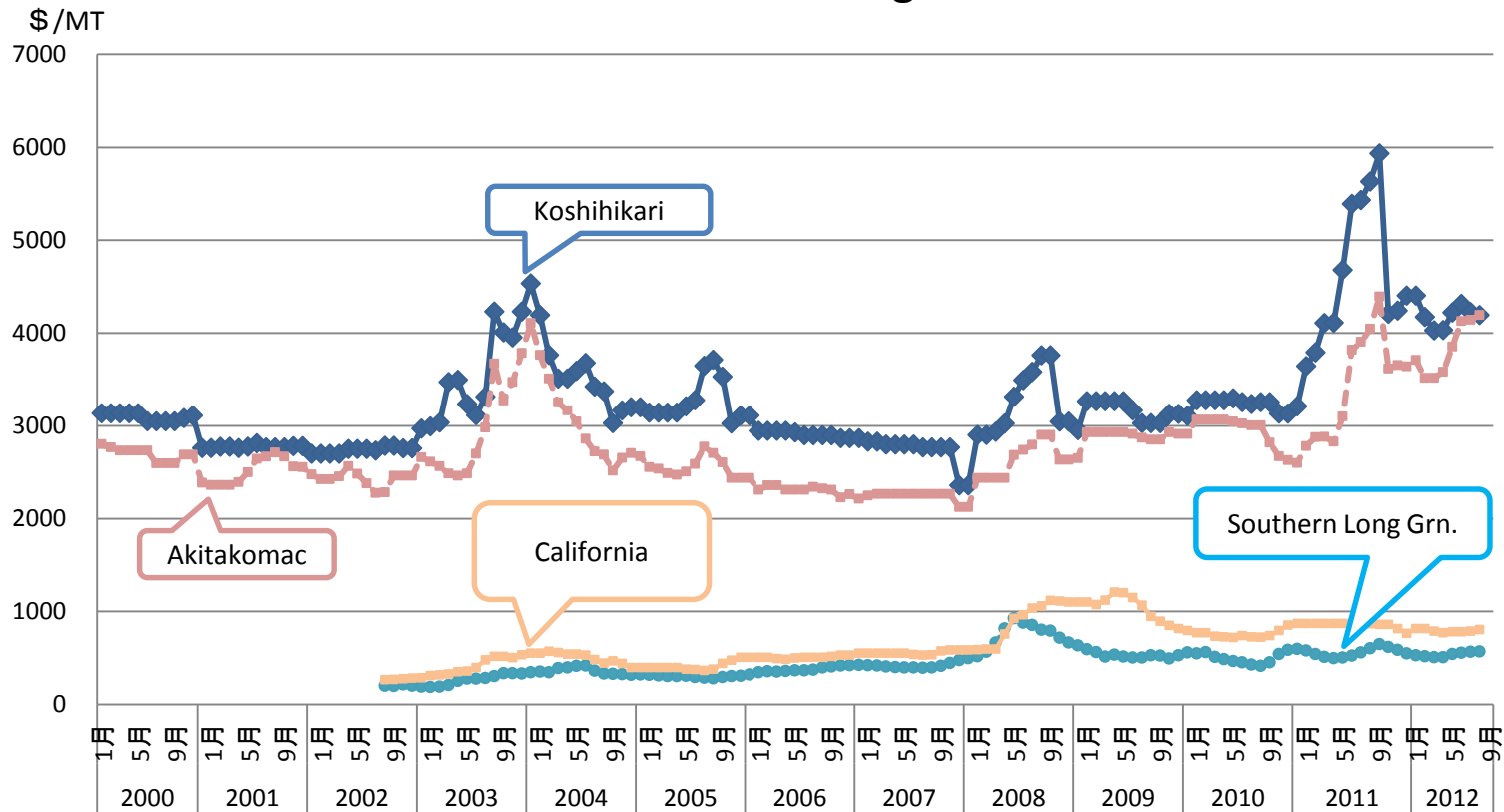
# Rice exports/imports and per capita consumption in Japan



Rice p.c. consumption declined to a half during the half century.

Sources: 伊東正一:世界の食料統計、<http://worldfood.apionet.or.jp/graph/index.html>  
 元データ: USDA: PS&D Online , September 2012;  
 USBC: International Data Base, July 2003.

## Rice wholesale prices in Japan and the U.S. (milled basis, \$/MT) (Jan. 2000 – Aug. 2012)



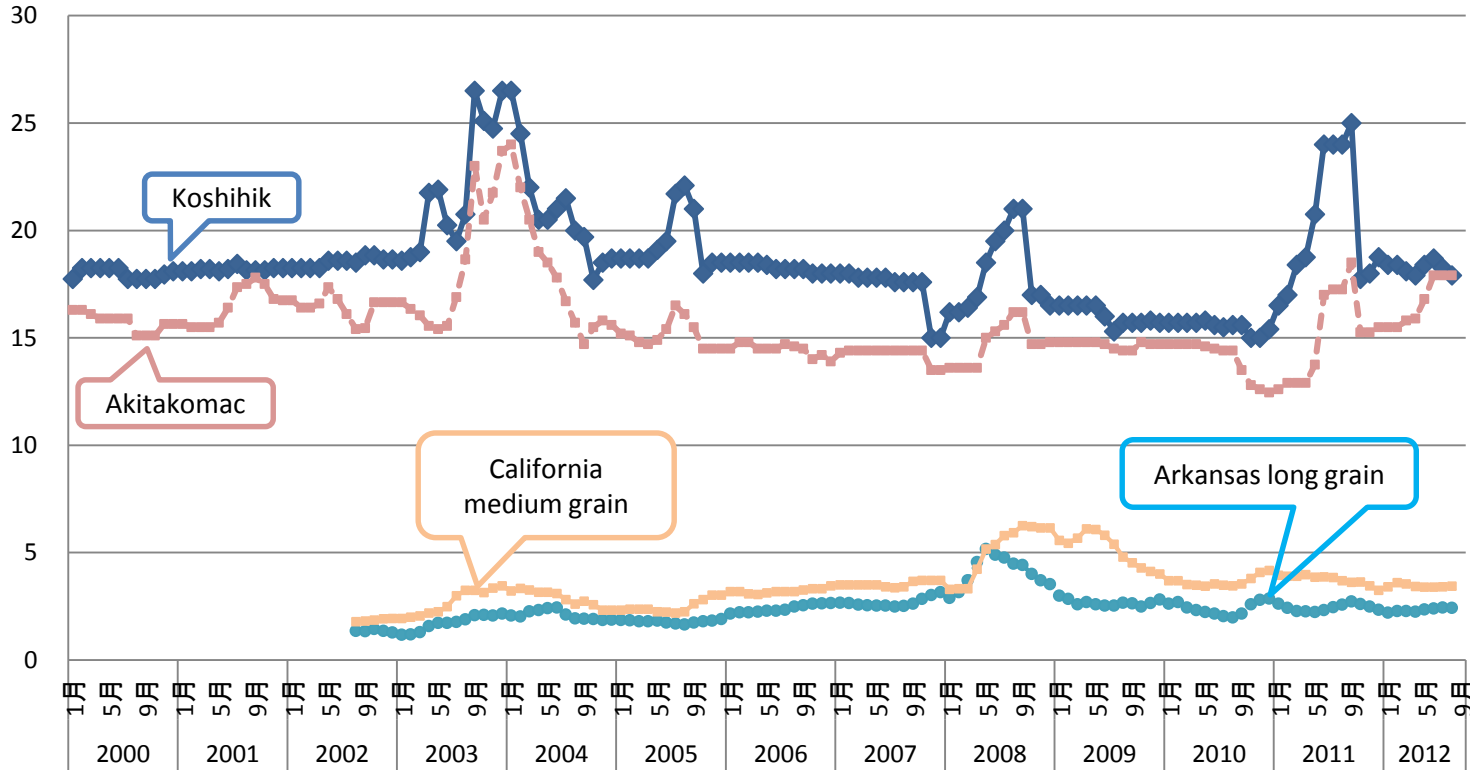
ソース: 米国農務省(USDA)及び日本経済新聞

九州大学農学研究院農政学教室 (代表: 伊東正一)

注: 為替レートは、三菱UFJリサーチ&ファイナンスの年平均から引用した。 [http://www.murc.jp/fx/year\\_average.php](http://www.murc.jp/fx/year_average.php)

## Difference in rice prices in Japan and the U.S. 、 Brown rice, yen/60kg, (Jan. 2000 – Aug. 2012)

(1000 yen/60kg)



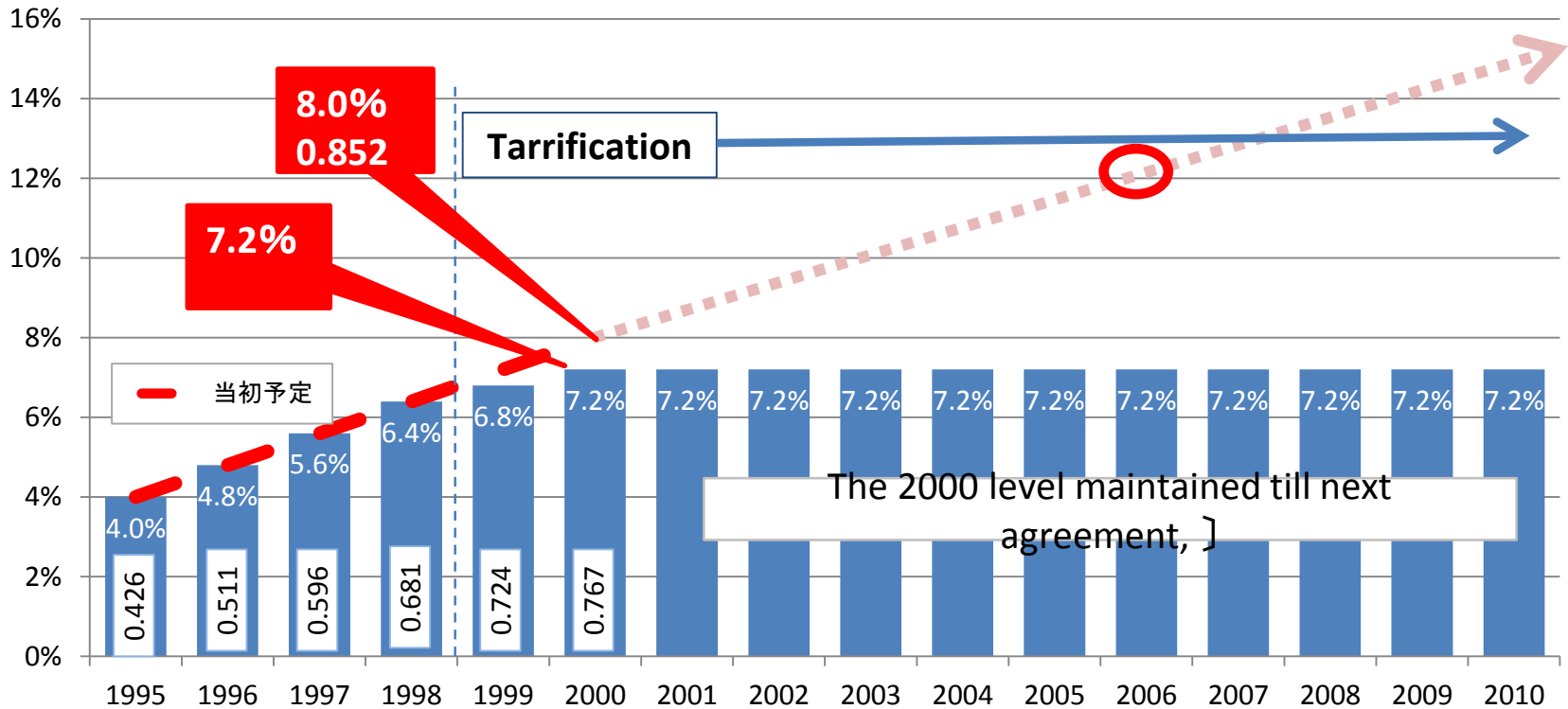
ソース: 米国農務省(USDA)及び日本経済新聞

九州大学農学研究院農政学教室 (代表: 伊東正一) <http://worldfood.apionet.or.jp/riceprice/ricepriceJ.htm>

注: 為替レートは、三菱UFJリサーチ&ファイナンシャルの年平均から引用した。

# MA Rice imports to Japan (1995-2010)

(Brown rice base, Million MT, %)



Source: MAFF "Information and data for rice" 2010

※Due to shift to tariffication, volume of MA rice reduced from the original 0.852 MMT to 0.767 MMT in 2000 and after.

※The base for the percentages is the average consumption during 1986-88.

## Origins and volumes of MA rice imports to Japan, 1995–2007 marketing years.

(10,000 MT, brown)

	1995	1996	1997	1998	1999	2000	2001	2002	2003	2004	2005	2006	2007	Total
U.S.	19	23	29	32	34	36	36	36	36	36	36	36	36	425
Thailand	11	14	15	15	16	17	15	15	15	19	19	18	25	214
China	3	4	5	8	9	10	14	11	11	10	9	8	8	110
Australia	9	9	9	11	11	12	11	10	9	2	2	5		100
Others	1	1	2	2	2	2	1	5	5	10	11	10	1	53
<b>Total</b>	<b>43</b>	<b>51</b>	<b>60</b>	<b>72</b>	<b>68</b>	<b>77</b>	<b>77</b>	<b>77</b>	<b>76</b>	<b>77</b>	<b>77</b>	<b>77</b>	<b>70</b>	<b>902</b>

Source: MAFF: "Report on MA Rice Imports in Japan, 2010."

# Key Points for Rice in Japan

- **Decreasing rice consumption**
  - From 120kg in 60s to 64kg in '12
  - High prices relative to international
  - Attractive to rice exporters
- **Still very important politically**
  - Rice is a symbol of ag. In Japan
  - Politicians try to protect rice



# GM rice in Japan

- **Only experimental level**
  - Active in research in univ. and institutes
- **Consumers allergic to GM**
  - Not easy to accept for food